

Doing Business in the Sustainable Built Environment

Rushlights – Sept 2019

Presentation by
Steve Munn, Hevasure Ltd



Why...

do we continue to see failures and unplanned downtime in heating and chilled water systems?

... that is costing building owners, installers and FM companies a small fortune to rectify

Why...

are we not realising the promised levels of efficiency over time?

... that is leading to higher energy bills and increased carbon footprint



Because, quite simply ...

Corrosion is the unseen enemy which wrecks water-based HVAC systems and significantly reduces efficiency

The current approach of periodic water sampling and analysis is seriously flawed



So, rather than water sampling, why don't we ...

Remotely and continuously monitor the parameters that cause corrosion

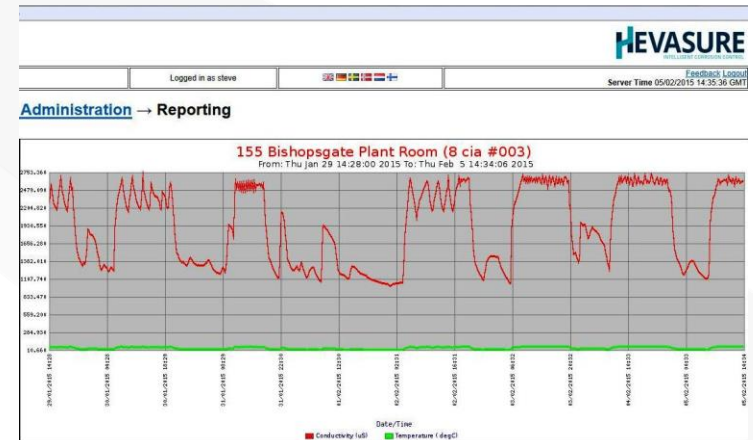
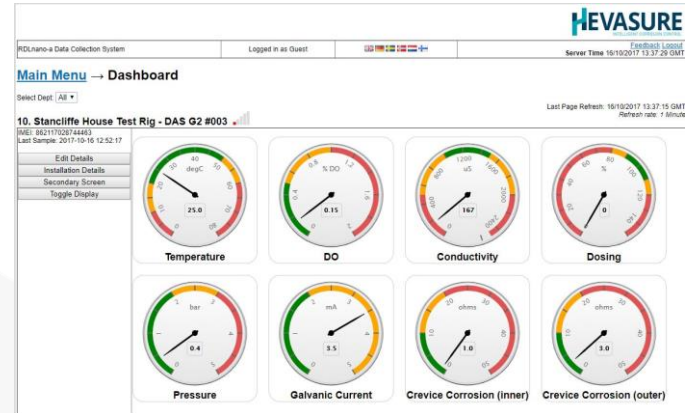
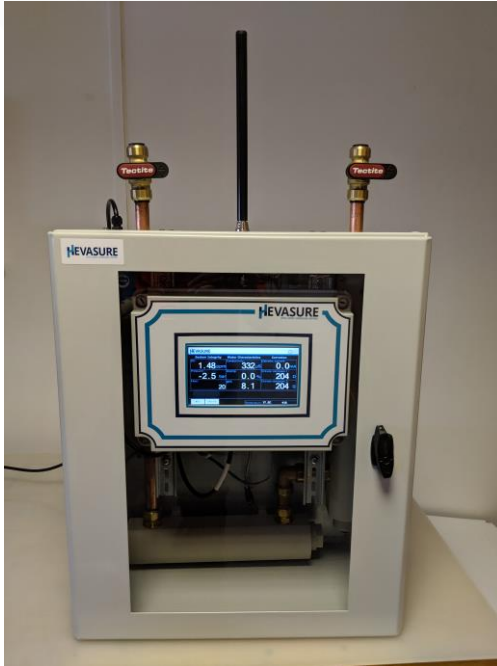
Send out alerts to warn of adverse conditions
...BEFORE damage occurs

Record critical system data every 15 minutes

The Hevasure Remote Monitoring technology

- ❖ Significantly reduces the risk of premature failure & extends system life
- ❖ Enables monitoring and control during commissioning phase as well as on-going operation
- ❖ Quickly identifies the root cause of issues at problematic sites
- ❖ Reduces the need for site visits and water sampling
- ❖ Reduces energy bills and carbon footprint by keeping HVAC systems in pristine condition

The Hevasure Monitoring Station and dashboard



Thank you for your time today

Steve Munn, Hevasure Ltd

smunn@Hevasure.com

Tel: 01629 735 743

www.hevasure.com

